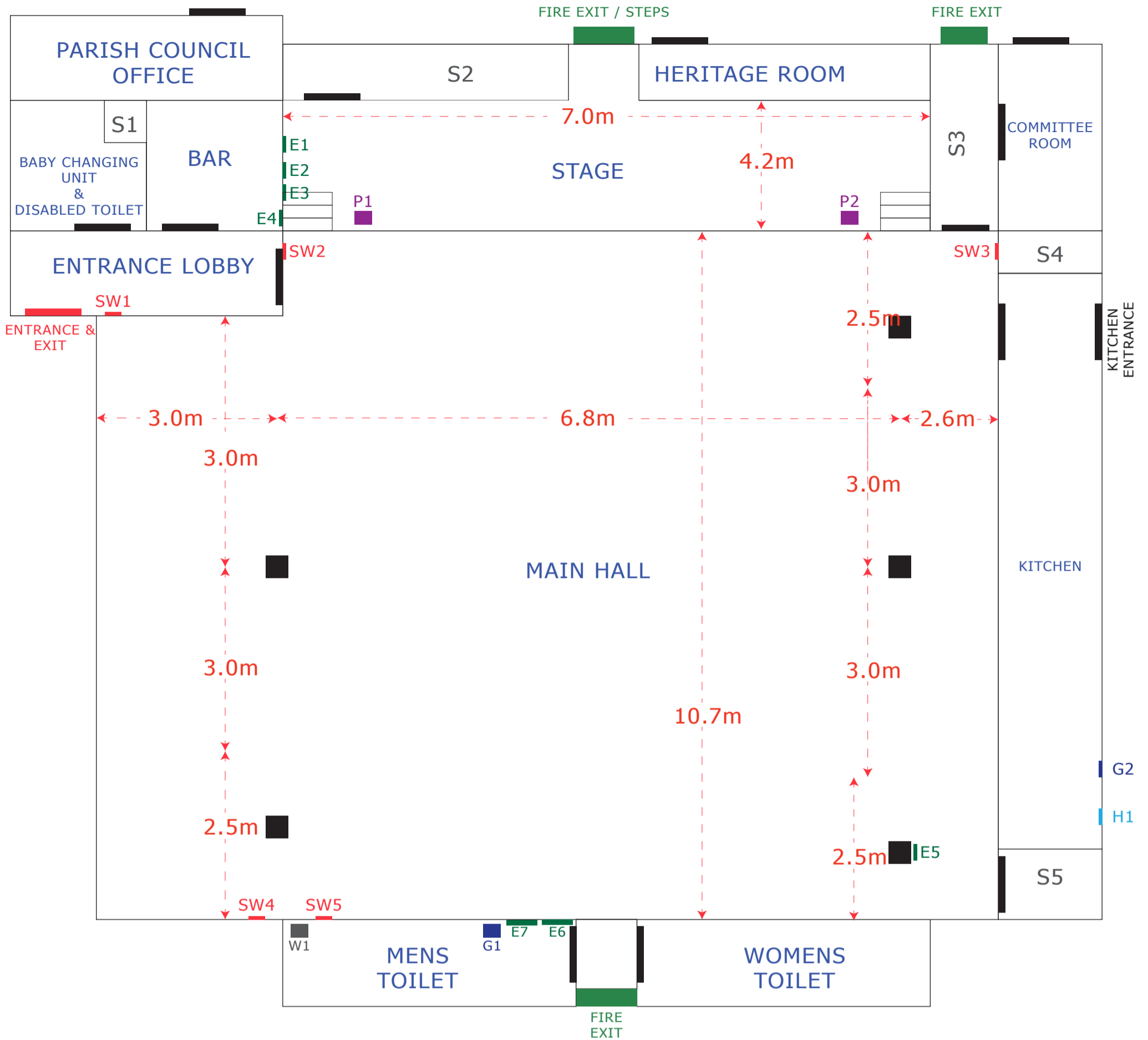


- | | | | |
|-----|--|------|---|
| E 1 | Electrical distribution box (stage) | W 1 | Water rising main (under vanity unit) |
| E 2 | Spotlight controls | SW 1 | Veranda light switch (Turn off when leaving hall) |
| E 3 | Electrical distribution box (Parish Council) | SW 2 | Coloured fairy lights (Turn off when leaving hall) |
| E 4 | Electrical distribution box (Bar area) | SW 3 | Kitchen side wing lights (Turn off when leaving hall) |
| E 5 | Electrical distribution box (Kitchen supplies) | SW 4 | Veranda side wing lights (Turn off when leaving hall) |
| E 6 | Main electrical distribution box electricity meter (in cupboard by vanity unit) | SW 5 | Main hall light control (Turn off when leaving hall) |
| E 7 | Car park light switch (in cupboard by vanity unit) | | |
| P 1 | Stage power timed Mon- Friday & Saturday:
Sun: 08:00 to 18:00
Sat: 08:00 to 23:45
Mon - Fri: 08:00 to 23:45 | S 1 | Cleaning cupboard (Mops and brooms) |
| P 2 | Stage power timed Mon- Friday & Saturday:
Sun: 08:00 to 18:00
Sat: 08:00 to 23:45
Mon - Fri: 08:00 to 23:45 | S 2 | CVH committee storage |
| | | S 3 | CVH committee + contact user storage |
| | | S 4 | CVH committee + contact user storage |
| | | S 5 | Table/chair storage (all tables + 8 stacks of 5 chairs) |
| | | H 1 | Heating controls |
| | | G 1 | Gas meter (under vanity unit) |
| | | G 2 | Gas cooker isolation valve |



- | | | | |
|-----|--|------|---|
| E 1 | Electrical distribution box (stage) | W 1 | Water rising main (under vanity unit) |
| E 2 | Spotlight controls | SW 1 | Veranda light switch (Turn off when leaving hall) |
| E 3 | Electrical distribution box (Parish Council) | SW 2 | Coloured fairy lights (Turn off when leaving hall) |
| E 4 | Electrical distribution box (Bar area) | SW 3 | Kitchen side wing lights (Turn off when leaving hall) |
| E 5 | Electrical distribution box (Kitchen supplies) | SW 4 | Veranda side wing lights (Turn off when leaving hall) |
| E 6 | Main electrical distribution box electricity meter (in cupboard by vanity unit) | SW 5 | Main hall light control (Turn off when leaving hall) |
| E 7 | Car park light switch (in cupboard by vanity unit) | | |
| P 1 | Stage power timed Mon- Friday & Saturday:
Sun: 08:00 to 18:00
Sat: 08:00 to 23:45
Mon - Fri: 08:00 to 23:45 | S 1 | Cleaning cupboard (Mops and brooms) |
| P 2 | Stage power timed Mon- Friday & Saturday:
Sun: 08:00 to 18:00
Sat: 08:00 to 23:45
Mon - Fri: 08:00 to 23:45 | S 2 | CVH committee storage |
| | | S 3 | CVH committee + contact user storage |
| | | S 4 | CVH committee + contact user storage |
| | | S 5 | Table/chair storage (all tables + 8 stacks of 5 chairs) |
| | | H 1 | Heating controls |
| | | G 1 | Gas meter (under vanity unit) |
| | | G 2 | Gas cooker isolation valve |